




# Beamex ePG Electric Pressure Pump and Controller

## Firmware update instructions



**Note:** It is not recommended to use the ePG update application with a Windows version older than Windows 10.

If Beamex ePG Electric Pressure Pump and Controller firmware is updated from a PC for the first time, correct Windows driver needs to be installed:

1. Connect the USB cable between the ePG and PC.
2. Switch the ePG off.
3. Hold the Coarse Up  and Coarse Down  buttons and at the same time press the Power  button (this activates firmware update mode and device is visible to the PC).



**Note:** Mind that no LEDs will light up during this operation. The ePG will however be visible to the PC.

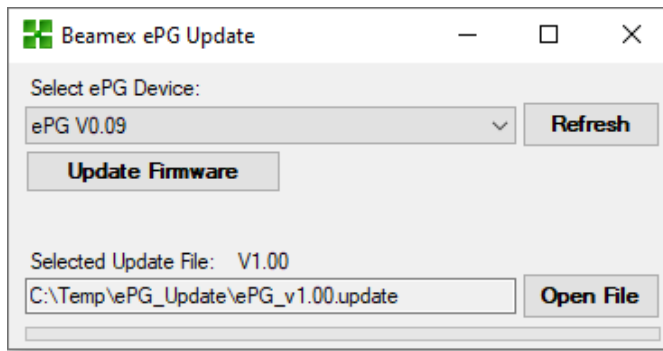
4. Update the drivers (for details check [Updating the USB driver](#) instruction). You need to have **Admin rights** to be able to update the driver.
  - I. Open the Windows Device Manager.
  - II. Find the USB device and manually update the drivers. They are included in the update folder: **ePG\_Update\Driver**.
5. Run the ePG update software (*ePG\_Update.exe* in the installation package).
6. Current ePG firmware version can be seen in the device selection, for example “ePG V1.00”.



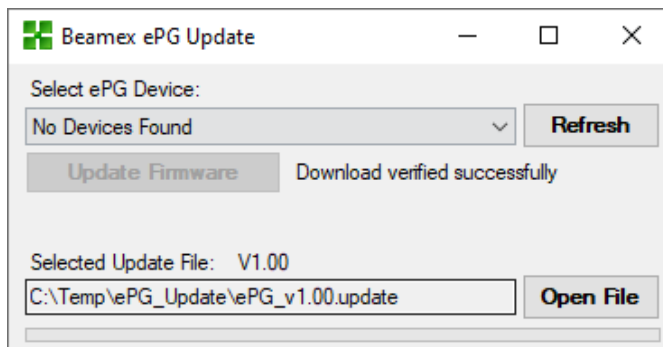
**Tip:** If you don't want to change the current ePG firmware version, follow these steps:

- I. Disconnect the USB cable.
- II. Press and hold ePG's Power button for at least 10 seconds. This will stop firmware update mode by doing a forced power down of the ePG. Alternatively, disconnect the ePG's battery to power down the ePG.
- III. After powering down, the ePG will no longer be in firmware update mode and will start normally after pressing Power button again.

7. Select the update file (if it isn't selected automatically) and press **Update Firmware**.



8. After successful update, program will prompt a message: "Download verified successfully".

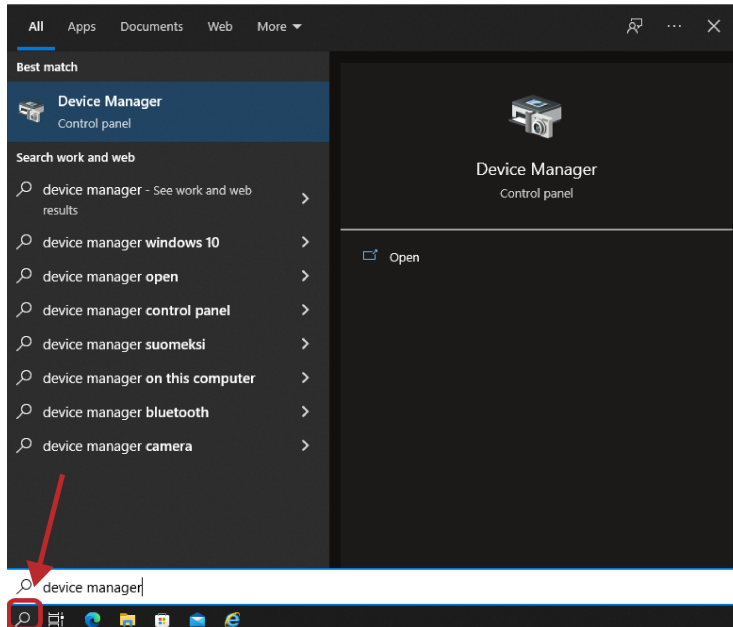


9. Device will restart.
10. Disconnect the USB cable between the ePG and PC.

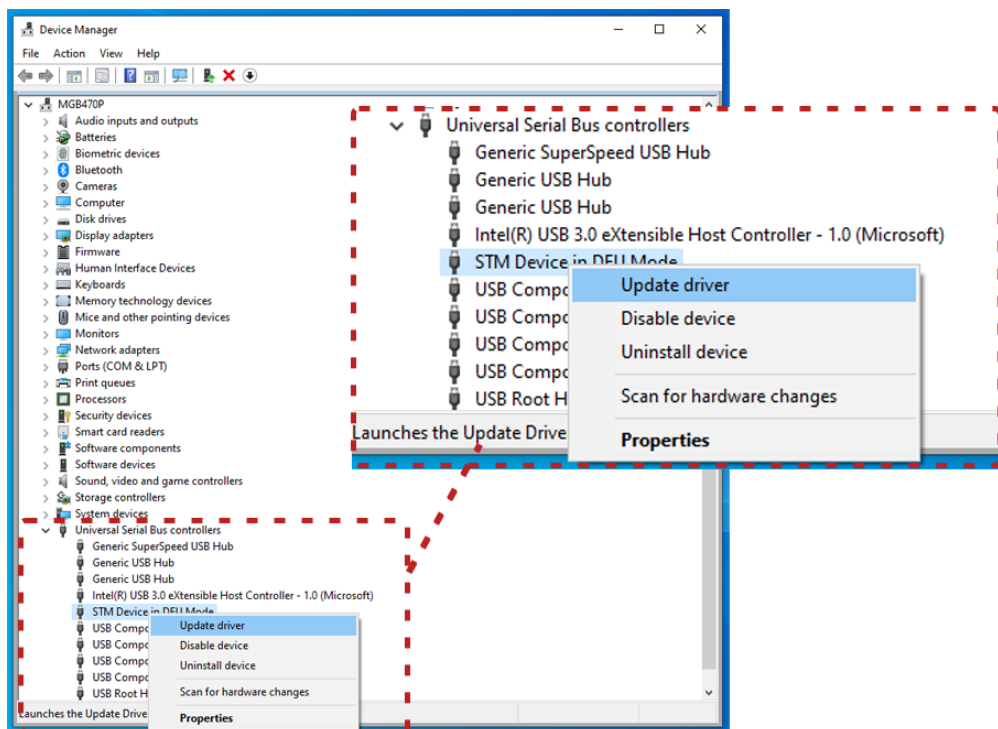
# Updating the USB driver

To manually update the driver:

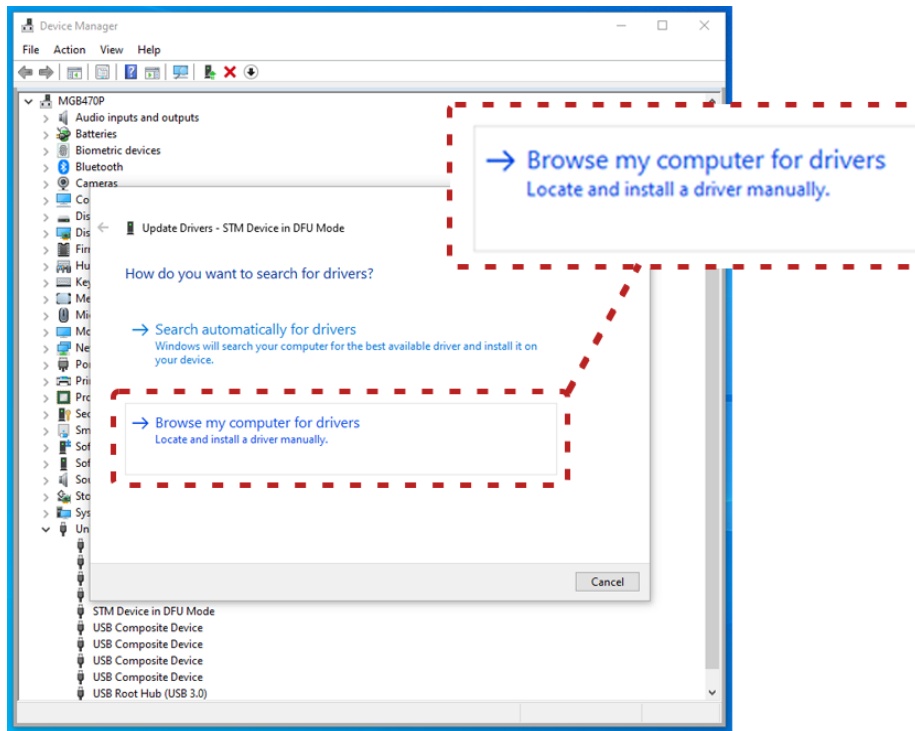
1. Open the Windows Device Manager. You can use the Search tool found on the Windows taskbar.



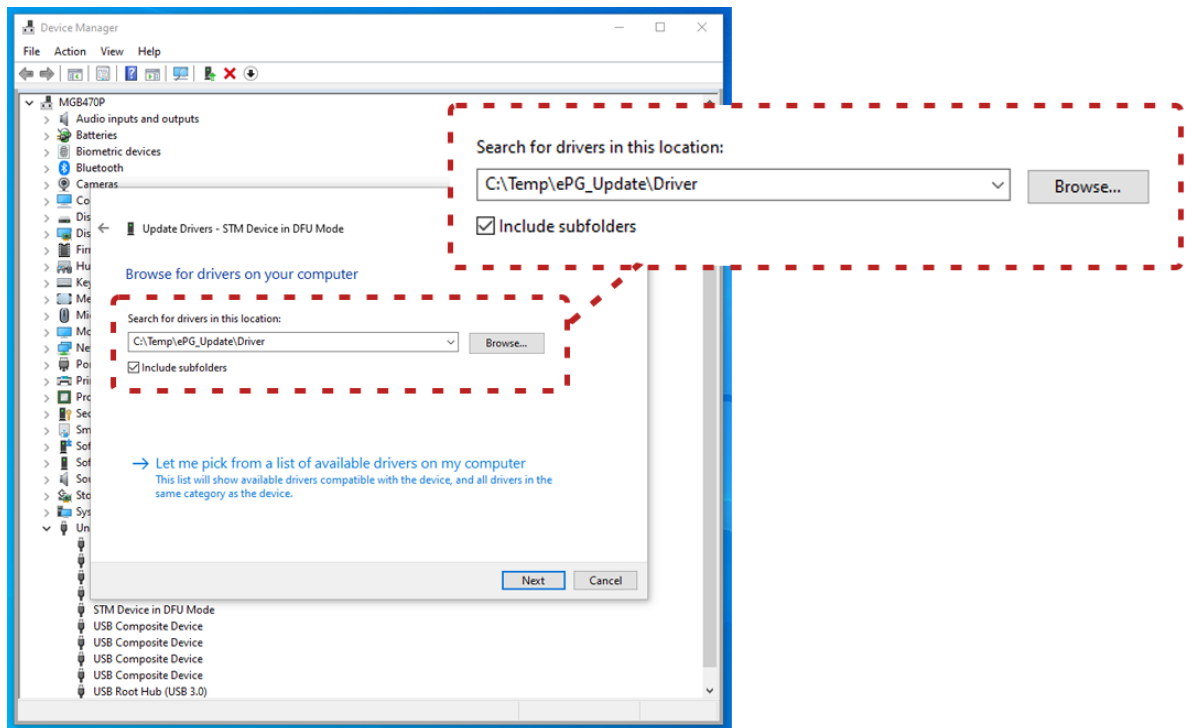
2. Right-click the **STM Device in DFU Mode** (found under Universal Serial Bus controllers) and select **Update driver**.



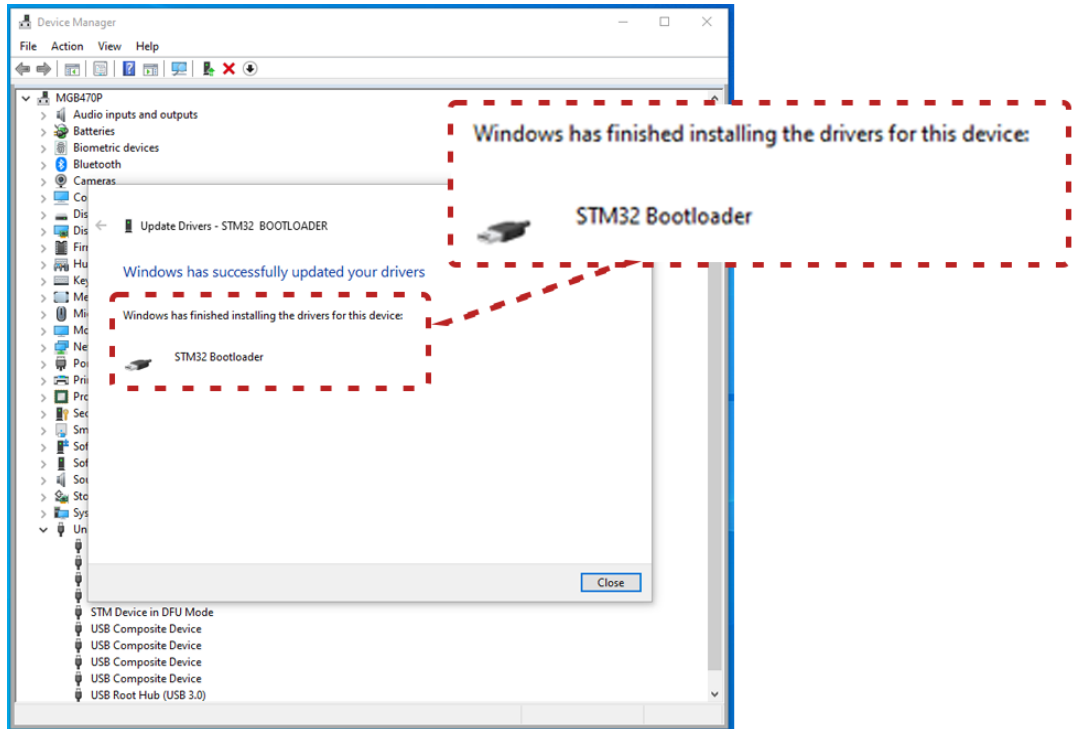
3. Select **Browse my computer for drivers**.



4. Browse for the correct location (**ePG\_Update\Driver** folder found in the installation package) and press **Next**.



5. Driver will be installed.



6. Newly updated driver is now visible in the Windows Device Manager.

